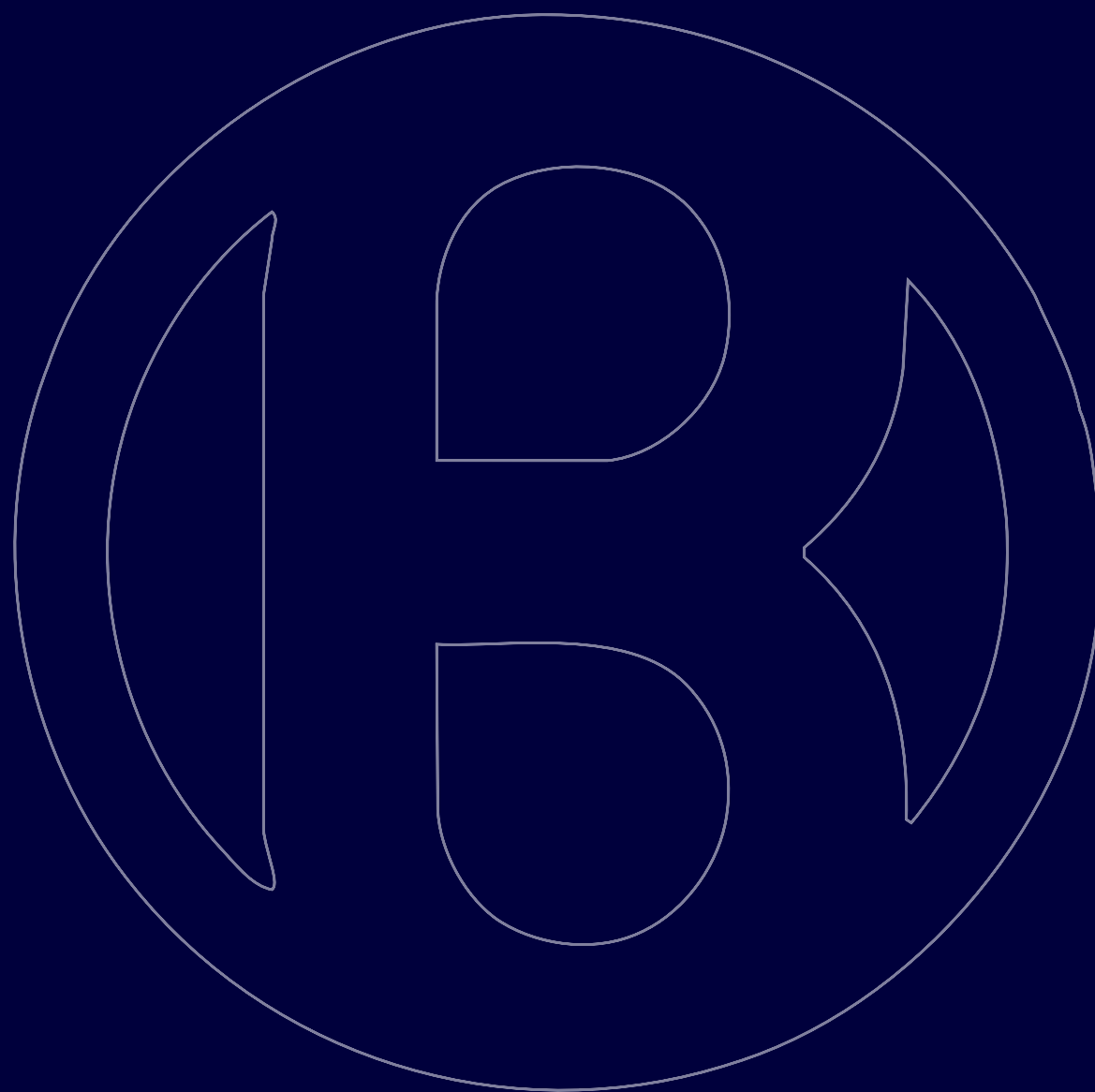




## THE VTR SERIES



IBOCO Corporation  
26 Northfield Ave., Edison, NJ 08837-3807  
Tel: 732.417.0066 Fax: 732.417.1166  
Email: [iboco@iboco.com](mailto:iboco@iboco.com) [www.iboco.com](http://www.iboco.com)

IBOCO is a wholly owned subsidiary of BOCCHIOTTI S.p.a



## DEMAND INNOVATION





IBOCO's New **VTR Modular Fiberglass Enclosures** allow you to

# THINK OUTSIDE THE BOX WORK



Removable door pin allows for left or right hinging in the field.

Standard key, optional lock available for maximum security.

Solid or window doors. Window doors for secured inspection.

Secure and durable molded handle.

Unique "Rail Channel Guides" for adjustable depth of din rail assembly, panels and frames.

Swing out inner door for enclosure security and device protection. Allows for right or left hinging.



Threaded insert for wall bracket mounting.

Modular frames with breakout shields for device spacing.

Innovative adjustable height din rail assembly for outside the box installation and field service.

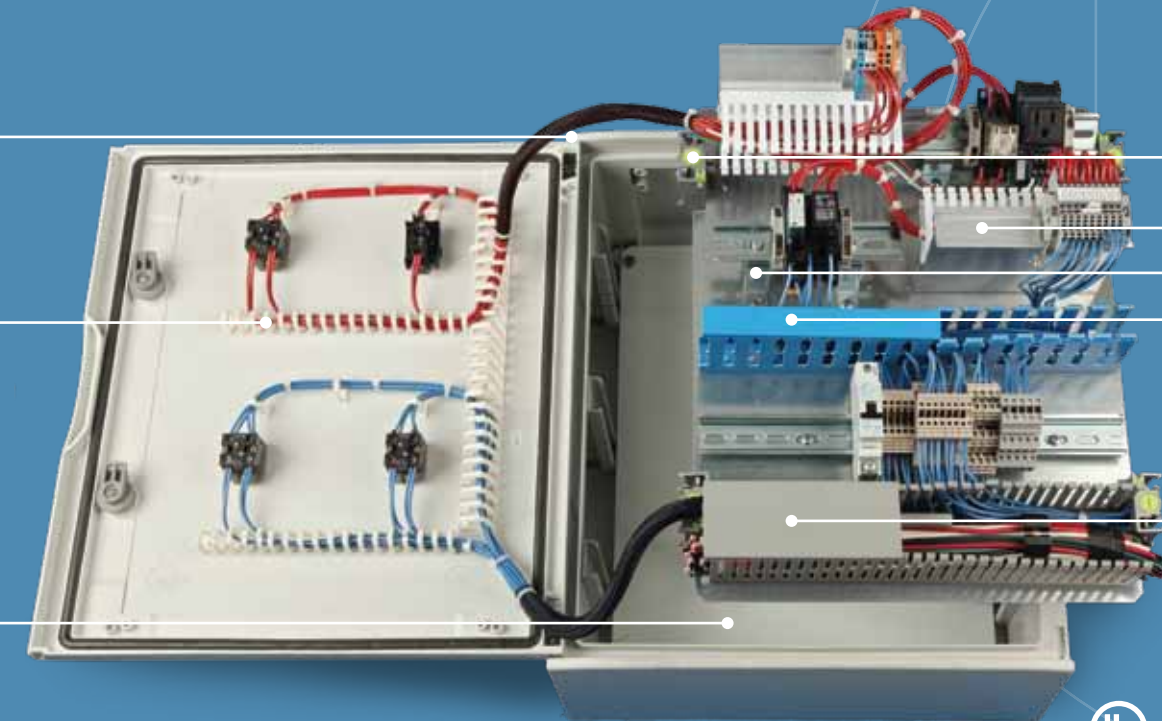
Impact and corrosion resistant fiberglass body.

Adjustable blank panel for customized installations and modifications.

Braided expandable sleeving provides wire protection on door hinges with high resistance to abrasion.

Dinosaur duct to insure wire management security via epoxy adhesive backing.

Insulated Mounting Plate: Environmental insulated back panel allows additional mounting options.



Din Rail Assembly, capturing the complete back panel structure, can be quickly unlocked, entirely removed from the enclosure in order to provide maintenance "outside the box."

Riser Din Rail

Din Rail stand-offs

Intrinsically safe blue wire duct

TIE high density wire duct, cover included.



## THE MODULAR FIBERGLASS ENCLOSURE

An innovator in the area of wire management, IBOCO continues its rich tradition in offering the market a comprehensive range of products that provide effective, efficient installations.

The new family of modular enclosures are designed to provide the installer an "ease of use" not found with any enclosure currently in the marketplace.

The 14 sizes available (seven solid door and seven window), offer a modular adjustable frame that enables the installer to virtually adjust din rail mounting components, modular panels and inner doors to desired heights, by literally using a quick quarter turn lock-in method, plug and play.

It is also designed so you may remove the entire back plate or din rail assembly from the enclosure making installation and maintenance much easier.

The VTR series provides modular solutions to the OEM that are unparalleled in the enclosure market. The innovative rail channel guides are designed for durability, ease of installation and maintenance.

Smaller enclosures are a viable option due to the space saving accessories that the VTR series offers.

The differentiated VTR series provides the OEM the competitive advantage over what is currently available in the marketplace. Labor, time, and budgetary concerns are alleviated.

For complete VTR product and accessory information, please request a full-line VTR catalog at [www.iboco.com](http://www.iboco.com). Enclosure Cad drawings are also available on the website.

Take the IBOCO challenge.  
**Work Outside The Box.**

## VERSATILE TOUGH REVOLUTIONARY

**INNOVATIVE  
ADJUSTABLE HEIGHT  
DIN RAIL ASSEMBLY FOR  
"OUTSIDE THE BOX"  
INSTALLATION AND  
FIELD SERVICE.**

Din Rail assembly blocks assemble rail at desired height quickly into the guides.

